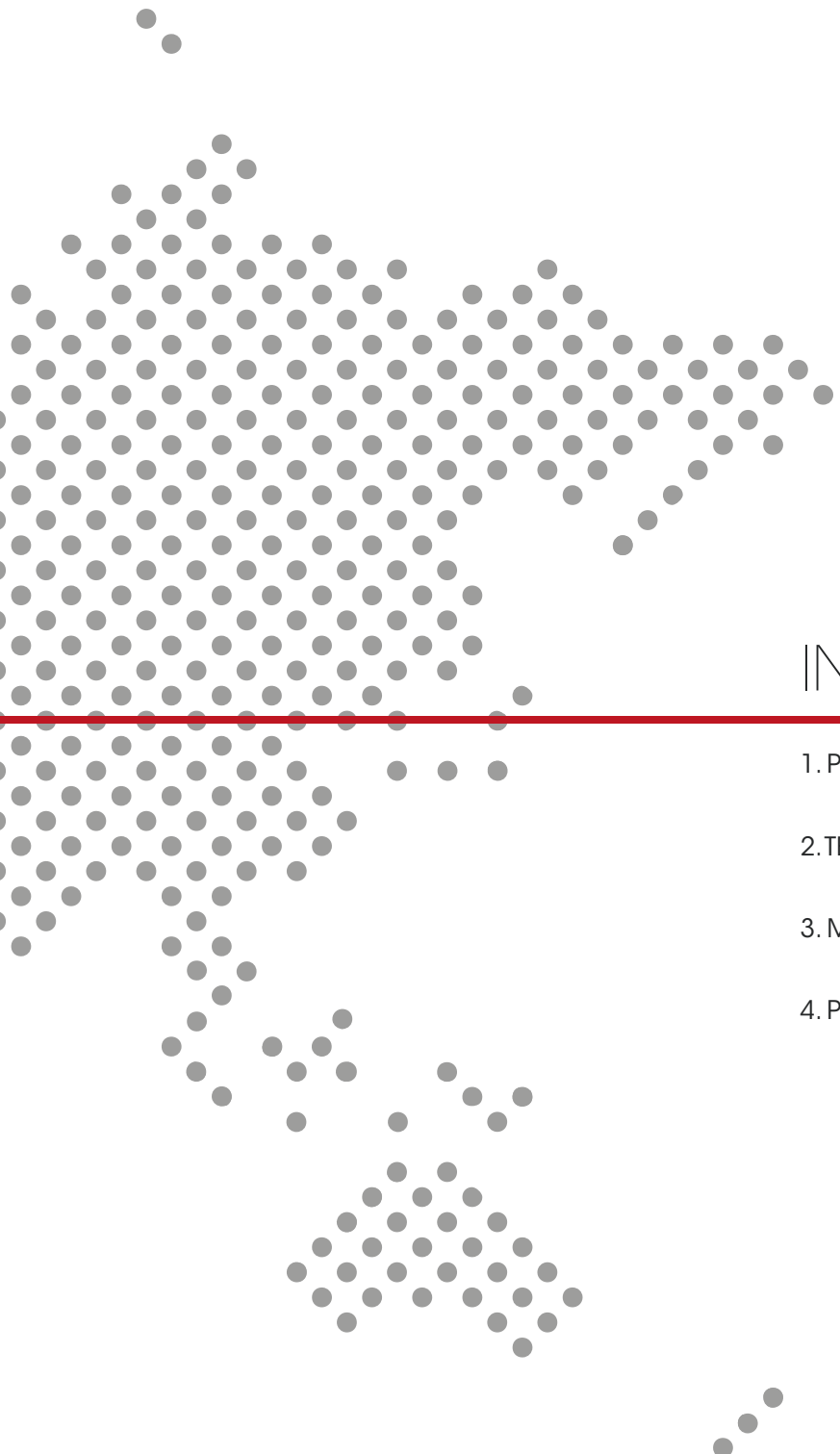




LAT 41

ARCHITECTS



# INDEX

1. PRESENTATION

2. TEAM

3. METHOD

4. PORTFOLIO





LAT 41 – Associated Architects is a company focused in architecture and urban design that was born from a dynamic alliance between NWL and ACS Architects. Working together over the past 10 years, they have built their success on collaboration, innovation and excellence in design.

As the companies' headquarters are located respectively in Salt Lake City, US and in Porto, PT, in addition to the shared values among both companies, they also have in common the Latitude, being geographically located on the same parallel: 41N.

## 1. PRESENTATION

---

Formed in order to expand each firm's geographic reach, this joint venture offers worldwide Clients the benefits of both companies, as it represents a genuine collaboration between the two companies in all project services, bringing together expertise in a vast range of architectural typologies, rather than the customary design architect/associate architect relationship.

Although both NWL and ACS Architects have worked nationally and internationally, this partnership also aims to bolster geographic access with expanded typology experience.

While historically focused on different project types, both firms overlap in culture and philosophy. They share a commitment to sustainable design and are industry leaders in their use of advanced building and design technologies such as BIM.

While maintaining the individual identity and operations, both companies pursue new projects together as LAT 41 – Associated Architects. NWL's strength in education, religious, civic/cultural, and commercial projects complement ACS Architects extensive experience in urban planning, health-care, housing, retail (commercial) and industry.





# LAT 41

## ARCHITECTS

## 2. TEAM

Our multidisciplinary team of professionals – with decades of experience in the field of Architecture, Engineering, Construction and Project Management – has an excellent track record of projects developed together of recognized technical and aesthetic quality.

Composed by a group of Architects, Interior Designers with great creative talent, with a technical and pragmatic approach, our team guarantees that project deliverables and their execution are of the highest quality, which invariably results in solutions recognized by both Clients and the general public.



# BOARD OF DIRECTORS



**Chris Lund**

aia, ncarb



**Eric Madsen**

aia, ncarb, leed ap



**Ross Wentworth**

aia, ncarb



**Philip Wentworth**

aia, ncarb, leed ap



**Simão Silva**

oasrn



**Margarida Caetano**

oasrn

### 3. METHOD

---

The coordination of a multidisciplinary team is essential for the integration of the various disciplines into one project. During all development phases, the proposed team runs its activity in a synchronized way, with frequent contacts, to ensure total focus and compatibility with the projects' objectives, while promoting its technical and economic optimization.

Building Information Modelling (BIM) is an essential tool in the design services we offer to our Clients as it provides added value to the final product. We use Computational Design and the most Collaborative

BIM workflows to give the best and most efficient solutions to each individual project's requirements. This methodology helps to rise the quality of the design while reduces any eventual conflicts as they are detected in a timely manner never reaching the construction phase.

Every project has a designated general coordinator, who is responsible for conducting the entire process, coordinating the various disciplines, managing deadlines and also serves as a pivot of communication between the Owner, the Design Team.





## 3. PORTFOLIO

---

P03/14 · U.S. Courthouse for the Utah District, Salt Lake City, Utah, USA

P05/11 · Porto Alto Students Residence, Porto, Portugal

P09/15 · Circuito do Sol, Serpa, Portugal · Co-author with RS Project

P12 · The Church of Jesus Christ of Latter-Day Saints – Lisbon, Portugal Temple; **official photos**

P12 · The Church of Jesus Christ of Latter-Day Saints – Praia, Cape Verde Temple; **official photos**

P13 · Viewmont High School, Bountiful, Utah, USA

P16 · Neil Armstrong Academy, West Valley City, Utah, USA

P17 · Wuhan Motorsports Culture Town, Wuhan, China · Co-author with RS Project

P18 · AF House, Miramar, Portugal

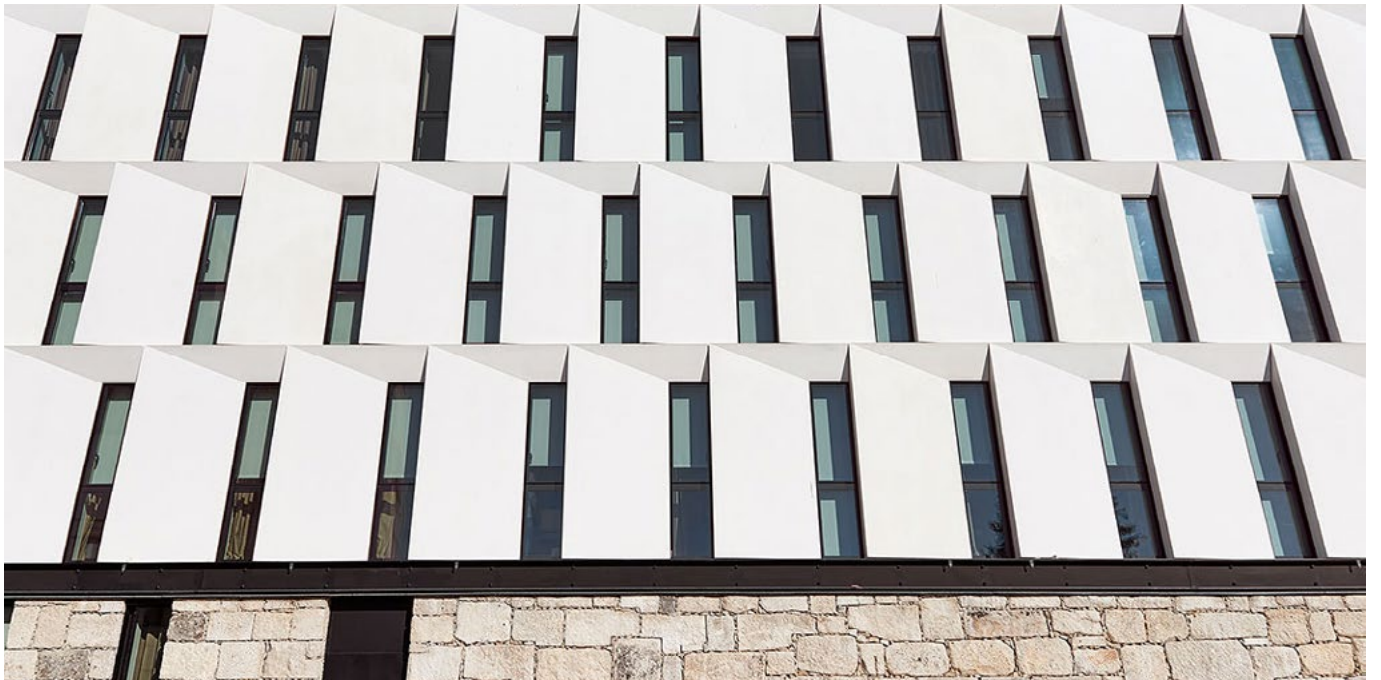
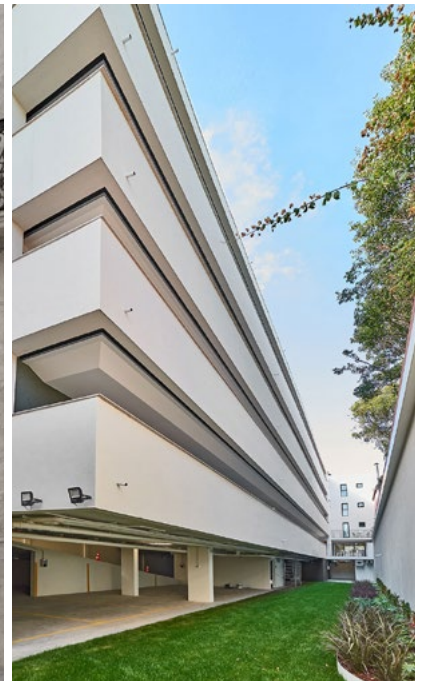
P19/20 · Granger High School, West Valley City, Utah, USA

P21/22 · CUF Hospital – Imagiology Renovation, Porto, Portugal

P23 · Conservas Pinhais Museum, Matosinhos, Portugal

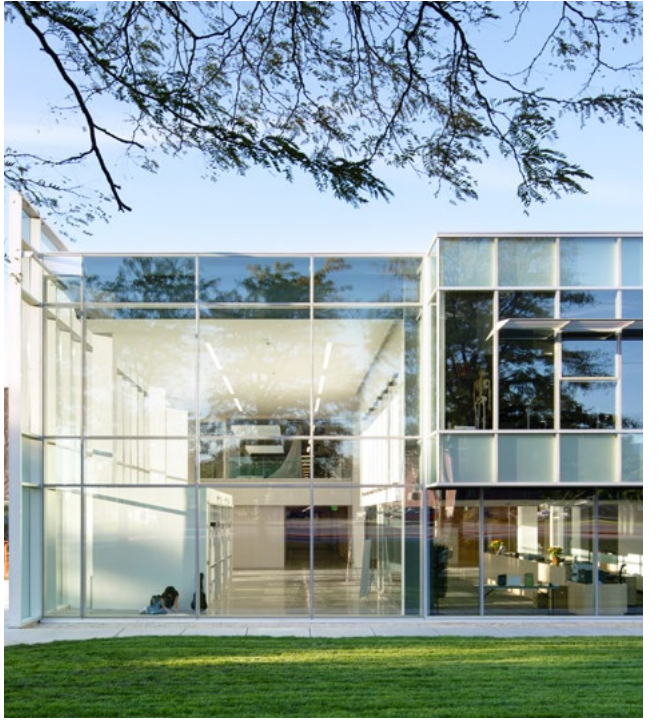
P24 · Barros Lima Guest House, Porto, Portugal



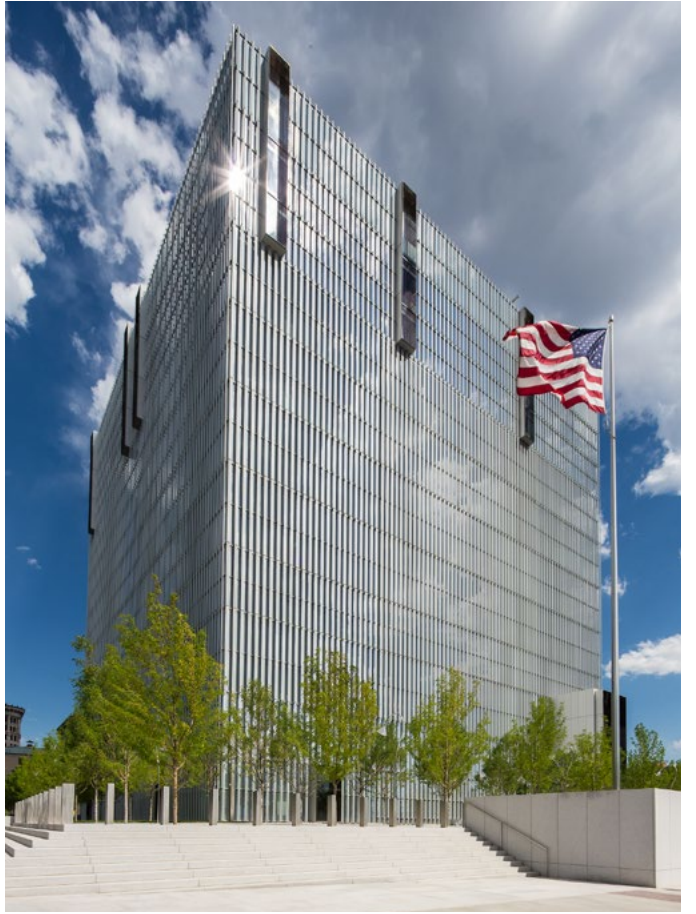








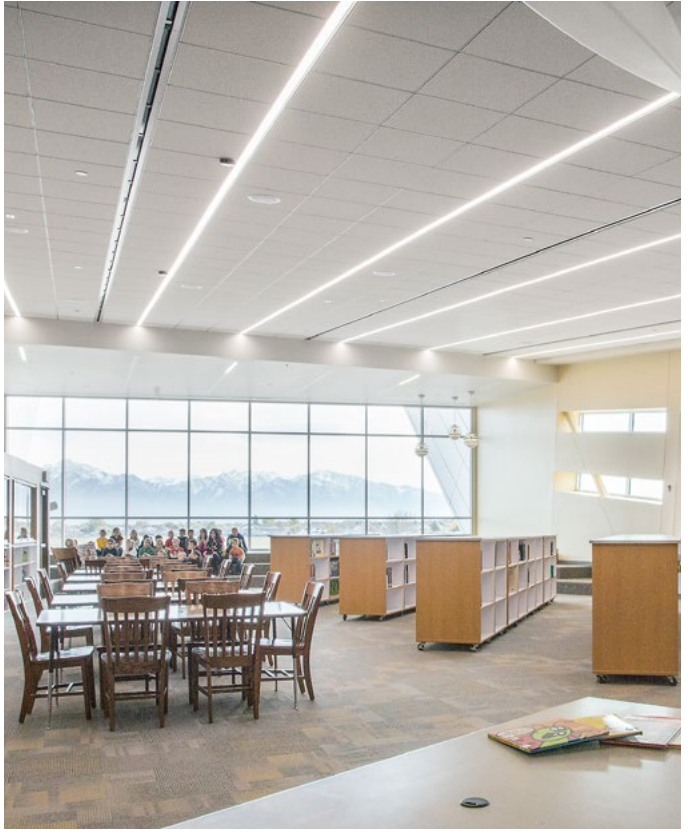








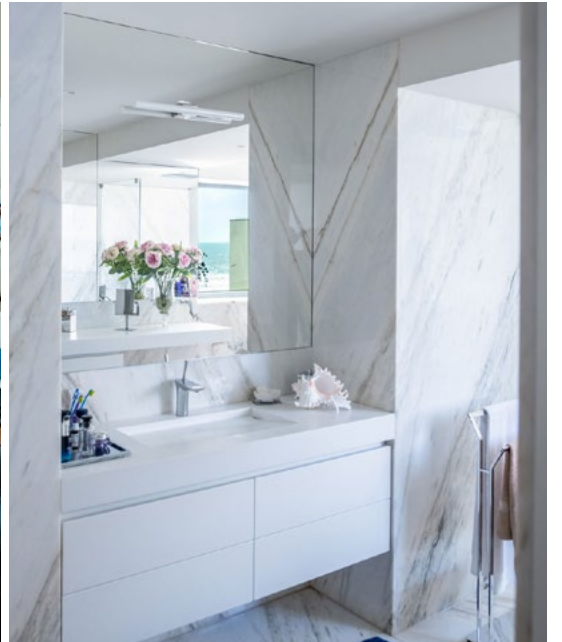














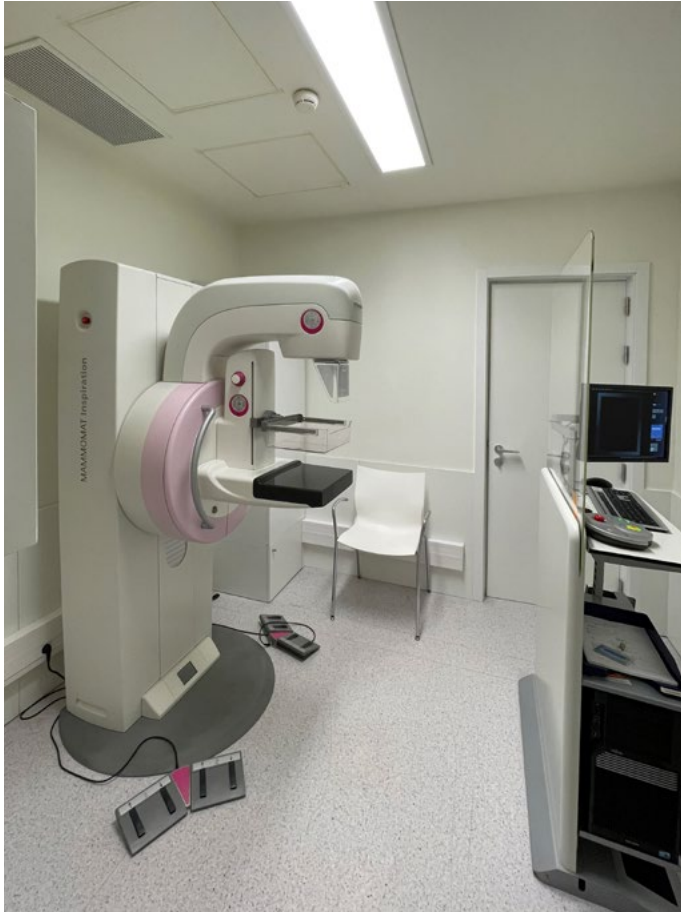
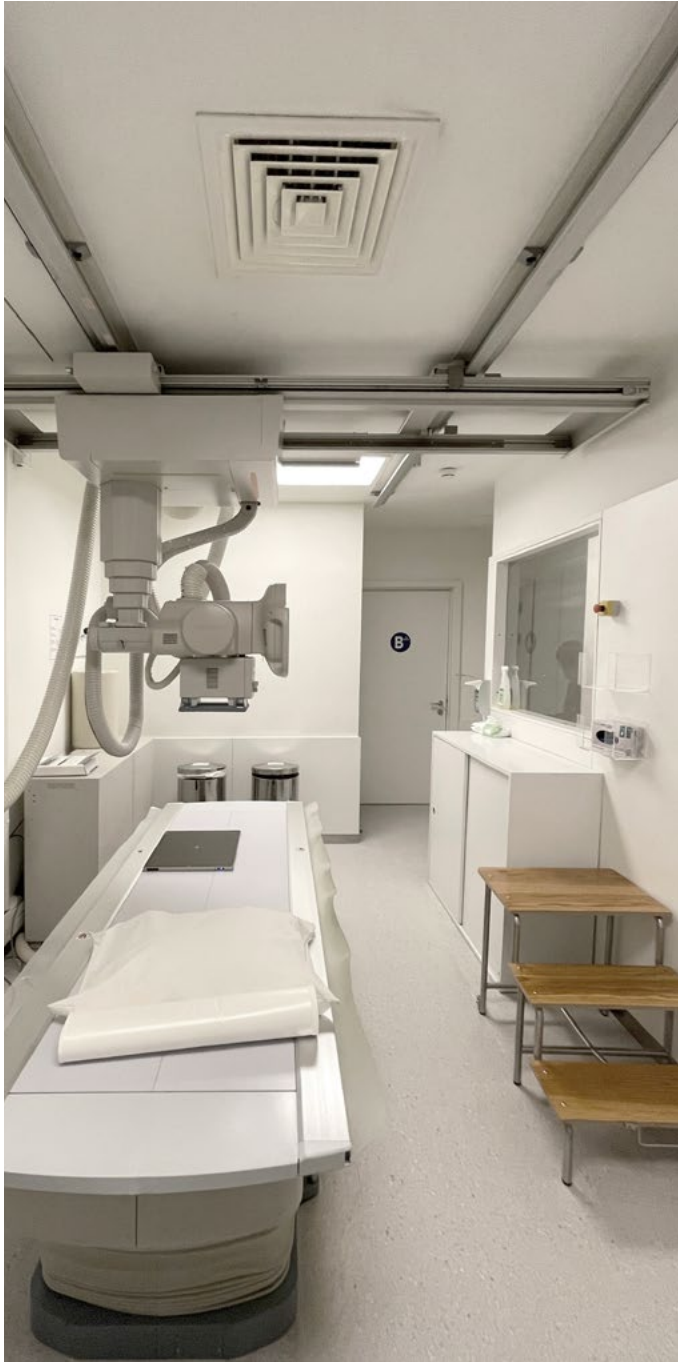












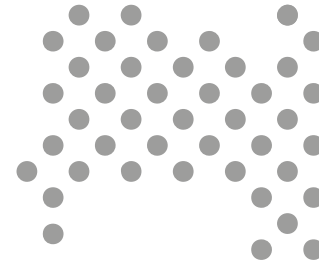






# LAT 41

ARCHITECTS



---

## Offices

723 West Pacific Avenue, Suite 101  
Salt Lake City, UT 84104 · USA

Rua João Oliveira Ramos, 87  
4000-294 Porto · Portugal

## Email

[mail@lat41architects.com](mailto:mail@lat41architects.com)

## Website

[www.lat41architects.com](http://www.lat41architects.com)